



Benton County Community Corrections Plan

2025 ~ 2027

Benton County Community Corrections Overview

Benton County Community Corrections (BCCC) is responsible for the supervision of Justice Involved Individuals (JII's) on probation, parole, post-prison supervision, and short-term transitional leave who reside in Benton County. Each element of our mission is vital to holding JII's accountable while maintaining community safety.

BCCC continues to implement evidence-based principles and practices that focus resources on individuals assessed as higher risk to reoffend and in greater need of support. Our approach is grounded in the belief that addressing each JII as an individual and through validated risk assessments, case planning, and community and resource referrals that promote long-term behavioral change and reduces recidivism. Our office maintains active partnerships with local providers and agencies to connect individuals to services related to treatment, employment, housing, education, and behavioral health.

JII's under supervision are subject to a wide range of accountability measures including unannounced contacts in the community, treatment referrals, residence and office visits, searches, sanctions, drug testing, and polygraph examinations where appropriate. Frequency and intensity of contact is based on the need of the individual and decreases over time as individuals demonstrate stability and compliance.

The 2023–2025 biennium presented both opportunities and challenges, including the continued impact of statewide criminal justice policy shifts, staffing transitions, the loss of the Benton County Drug Treatment Court, and the increasing complexity of community supervision needs. Despite these challenges, BCCC staff have remained professional, adaptive, and deeply committed to their role in supporting public safety and successful reentry.

As we move into the 2025–2027 biennium, our office remains committed to:

- Adhering to evidence-based supervision principles (risk, need, responsivity, fidelity)
- Utilizing validated risk and needs assessments
- Developing and updating individualized case plans
- Making strategic use of sanctions, incentives, and referrals
- Supporting Justice Reinvestment efforts and re-entry services
- Avoiding over-supervision of low-risk individuals
- Prioritizing supervision for high-risk/high-need JII's
- Collaborating with community partners to address system gaps and improve outcomes

Our staff continues to rise to meet the needs of the community through professionalism, compassion, and accountability, making Benton County safer for everyone despite the uncertainty of the State's Community Corrections funding. Our office will continue to prioritize resources, adhere to evidence-based principles, and focus on rehabilitative services for those individuals who pose the greatest risk to the community.

Accomplishments from the 2023 ~ 2025 Biennium

- Justice Reinvestment Grant Programs: Enhanced re-entry services for our Transition Program, our Evidence Based Programming, and continue the implementation of a Pre-Trial Program in Benton County.
- Continued to conduct in-house evidence-based programming facilitated by specially trained Parole and Probation Deputies.
- Continued active participation in statewide networks such as the Oregon Community Corrections Directors Association, Sex Offender Supervision Network, Field Automated User Group, Oregon Case Management Network, Department Public Safety Standards and Training Curriculum Workgroup.
- Continued active participation in local networks such as the Willamette Criminal Justice Council and the Sexual Assault Response Team.
- Increase community collaboration with Benton County Mental Health with onsite screenings for services.
- The retirement of a Parole and Probation Deputy – Susan Sowers (2024).
- The retirement of Community Corrections Director/ P&P Captain – Justin Carley (2025).
- Hired a new parole and Probation Deputy – Nick Miller (2024).
- Renewed our contract with a sex offender treatment provider and polygraph examiner.
- Continued use of our GPS program.
- Partnered with RemoteCom for enhanced monitoring of electronic devices.
- Supported the Benton County Circuit Court through the completion of Pre-Sentence Investigations.
- Maintained a robust in-house training program that covers topics such as cognitive behavioral interventions, risk assessment evaluation, case planning, defensive tactics, use of force, and search and seizure.
- Continued the operation of the Transition Center which provides transitional housing for high risk JIs or individuals that are otherwise difficult to place in the community.
- Continued supervision of unfunded misdemeanor cases placed on formal supervision.
- Completion of stage 1 of the Capital Improvement Project at the Transition Center.

Future plans heading into the 2025 ~ 2027 Biennium

- Continue improvement in implementation of in-house Evidence-Based Programming.
- Continue to adhere to evidence based supervision strategies and methods.
- Continue to examine and revise all current policies and procedures to ensure they are in line with best practices.
- Continue to work with community partners involved with Justice-Involved Individuals.
- Work with legislative leaders and criminal justice partners to explore incentive options and solutions to sustainable baseline funding for Community Corrections.
- Adapt to ongoing state policy and statute reform.
- Completion of stage 2 of the Capital Improvement Project at the Transition Center.

Benton County Sheriff's Office Mission

OUR MISSION ~ We provide professional public safety services with integrity and accountability.

OUR VISION ~ To be a progressive Sheriff's Office that is the cornerstone of public safety in Benton County.

OUR VALUES ~  DUTY  HONOR  COURAGE 

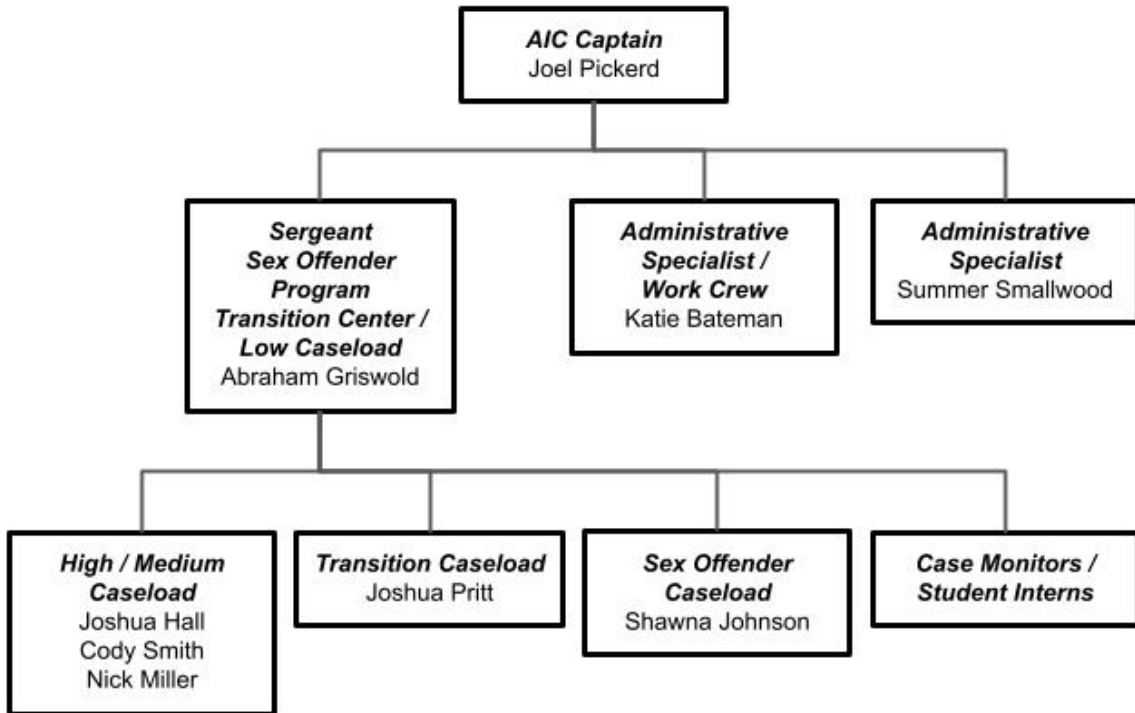
State Accredited since 2009

Benton County Community Corrections Mission

We serve the community by enhancing public safety through the reformation of justice-involved individuals and the reduction of criminal behavior.

- Respect the worth and dignity of all individuals
- Hold Justice-Involved Individuals accountable
- Identify risk in order to prioritize available resources and sanctions
- Utilize evidence-based programs and community partnerships

**BCSO Parole and Probation Division
Organizational Chart**



BENTON County

2025-2027 Community Corrections Biennial Plan

<p>Department of Corrections 3723 Fairview Industrial Drive SE Salem, Oregon 97310</p>	<p><i>For Office Use Only</i></p> <p><i>Date Received:</i></p>
<p>Address: 180 NW 5th Street, Corvallis, OR 97330 Phone: (541)-766-6226 Fax: (541) 766-6758</p>	
<p>Community Corrections Director/Manager: Joel Pickerd Address: 180 NW 5th Street, Corvallis, OR 97330 Phone: (541) 766-6226 Fax: (541) 766-6758 Email: Joel.Pickerd@bentoncountyor.gov</p>	
<p>Sheriff: Jefri Van Arsdall Address: 180 NW 5th Street, Corvallis, OR 97330 Phone: (541) 766-6055 Fax: (541) 766-6011 Email: Jefri.Vanarsdall@bentoncountyor.gov</p>	
<p>Jail Manager: John Devaney Address: 180 NW 5th Street, Corvallis, OR 97330 Phone: (541) 766-6786 Fax: (541) 766-6710 Email: John.Devaney@bentoncountyor.gov</p>	
<p>Supervisory Authority: Jefri Van Arsdall, Sheriff Address: 180 NW 5th Street, Corvallis OR, 97330 Phone: (541) 766-6055 Fax: (541) 766-6011 Email:Jefri.Vanarsdall@bentoncountyor.gov</p>	
<p>LPSCC Contact: Kim McDermid, WCJC Coordinator Address: 120 NW 4th Street, Room 404, Corvallis, OR 97339-3020 Phone: (541) 766-6190 Fax: (541) 766-6701 Email: Kim.Mcdermid@bentoncountyor.gov</p>	

Biennial Budget

State Grant-in-Aid Fund:	3,192,276
DOC M57 Supplemental Fund:	165,130
CJC Justice Reinvestment Grant:	410,099
Family Sentencing Alternative Program	
Transitional Funds	8,540
CJC Treatment Court Grant:	
County General Fund:	
Supervision Fees:	
Biennial Carryover (GIA, M57, FSAP):	
Other Fees: Polygraph	16,578
Other Fees: Sex Offender	34,897
Other State or Federal Grant:	
Other: Biennial Carryover (General Fund)	343,006
Other: Transitional Program (Levy Fund)	800,310
<u>Total:</u>	4,970,836

Program Name:	Administration
Program Description:	<p>The Community Corrections Director is responsible for the management and oversight of all Community Corrections operations and personnel. This includes daily administrative supervision, program development, budget preparation and monitoring, policy formation, contract management, interagency collaboration, and the development/implementation of new programming. The Director serves as the liaison between Benton County Community Corrections (BCCC), the Benton County Sheriff's Office, the Oregon Department of Corrections (DOC), and the Willamette Criminal Justice Council (LPSCC).</p> <p>The Director ensures adherence to applicable laws, DOC standards, performance measures, and the Benton County Community Corrections Plan. The position also plays a critical role in community education, systems coordination, and strategic planning. The Director is delegated these responsibilities by the Benton County Sheriff, who serves as the Supervising Authority, to carry out these duties which also includes the issuance of Local Control warrants.</p>
Program Category:	Administration
Program Objectives:	<ol style="list-style-type: none"> 1. The Director will monitor the budget, Intergovernmental Agreements, personal services contracts, and operational policies and procedures to ensure the mission is being accomplished as efficiently as possible. 2. The programs will operate within the proposed budget and guidelines of the Community Corrections Plan and ensure adherence to all contracts with the Oregon Department of Corrections. 3. The Director will work closely with the Willamette Criminal Justice Council, the Oregon Association of Community Corrections Directors, and the Oregon Department of Corrections on issues relating to effective Community Corrections operations. 4. The Director will conduct regular staff meetings and trainings to discuss cases, clarify policies and procedures, analyze program needs, identify training issues, and to facilitate group discussion on corrections-related issues. 5. The Director will track staff training requirements and ensure mandatory trainings are delivered to staff in a timely and effective manner. All certified employees will attend at least 40 hours of relevant training each year; non-certified employees will attend at least 16 hours of relevant training each year.

	<p>6. The Director will support staff retention and well-being by promoting professional development opportunities, encouraging leadership growth, and incorporating wellness-focused practices into agency culture.</p> <p>7. The Director will promote innovation and continuous improvement by utilizing internal audits, performance data, and statewide outcome measures to assess program fidelity, enhance service delivery, and support evidence-based practices.</p> <p>8. The Director will monitor and adapt to statewide criminal justice reforms, funding changes, and legislative updates to ensure program compliance and proactive system alignment.</p>
Method(s) of Evaluation:	Statewide Outcome Measures; internal caseload audits

Monthly Average to be Served:

Type of Offender(s) Served:

Crime Category:

Gender:

Risk Level:

Probation

Felony

Male

High

Parole/Post-Prison

Misdemeanor

Female

Medium

Local Control

Low

Which Treatment Provider(s) Will You Use Within This Program?

Provider Name	Treatment Type <small>(ie., Anger Management, Cognitive, DV, Dual Diagnosis, Sex Offender, Inpatient Substance Abuse, or Outpatient Substance Abuse)</small>	What, if any, state dollars are budgeted to the program and how much to each fund? <small>(ie., GIA-\$25,000; M57-\$5000)</small>

Funding Sources

- State Grant-In-Aid Fund 445,588
- DOC M57 Supplemental Fund _____
- Family Sentencing Alternative Program _____
- Transitional Fund _____
- CJC Justice Reinvestment Grant _____
- CJC Treatment Court Grant _____

- County General Fund
- Supervision Fees
- Biennial Carryover (GIA, M57, FSAP)
- Other Fees (revenue)
- Other State or Federal Grant

Other: Please Identify

-
-
-

Additional Comments:

Program Name:	Supervision
Program Description:	<p>Community Supervision</p> <p>The supervision program provides community-based supervision for adult Justice Involved Individuals (JII's) who are on parole, post-prison supervision, probation, short-term transitional leave (STTL), or Interstate Compact and who reside in Benton County. The goal of the program is to promote public safety, hold individuals accountable, and support positive behavioral change through risk-informed case management and evidence-based practices.</p> <p>Supervision activities include risk and needs assessments, development of individualized case plans, office visits, field contacts, residence checks, GPS monitoring, and enforcement of ordered conditions. Parole and Probation Deputies utilize structured sanctions, motivational interviewing, and cognitive behavioral tools to address criminogenic needs and encourage positive change. Individuals may be subject to drug testing, polygraph examinations, and referrals for treatment or other services.</p> <p>Supervision staff coordinate closely with local service providers to support access to behavioral health treatment, substance use services, housing, employment, education, and other stabilizing resources. The frequency and intensity of supervision is driven by validated risk assessment tools, with higher-risk individuals receiving more intensive oversight.</p> <p>Transition Program / County and DOC Pre-Release Planning</p> <p>The Transition Program is designed to enhance public safety by supporting the successful reentry of individuals returning to the community from Oregon Department of Corrections (DOC) institutions or the Benton County Jail. The program emphasizes early engagement, comprehensive planning, and coordination of stabilizing resources to reduce recidivism and promote long-term change.</p> <p>A designated Transition Deputy is responsible for identifying all individuals scheduled to release to Benton County on short-term transitional leave (STTL), parole, or post-prison supervision. Approximately 90 days prior to release, the deputy conducts "reach-ins" with DOC adults in custody. These targeted interactions prepare individuals for the challenges of community reintegration and provide realistic information about available services and expectations.</p> <p>The Transition Deputy works with each Justice Involved Individual (JII) to develop a release plan and connect them with essential community resources including housing, clothing, transportation, identification, and</p>

	<p>treatment or support services. Participants are educated on evidence-based principles, risk assessment tools, and how to access services that support stabilization and success. The program also ensures that all statutory notifications, such as those to the Sheriff's Office, District Attorney, courts, and victims are completed in a timely and accurate manner, meeting legal requirements and enhancing community awareness.</p> <p>Sex Offender Supervision Program</p> <p>This program enhances public safety through the specialized supervision of individuals convicted of sex offenses and have special conditions of supervision specific to sex offenders. A designated Parole and Probation Deputy, trained in sex offender supervision, is assigned to this caseload to ensure comprehensive, risk-informed oversight.</p> <p>The supervising deputy conducts specialized risk assessments, including the Static-99R, Stable, and Acute instruments, to determine supervision level and treatment needs. Case management responsibilities include referrals to cognitive-based sex offender treatment, monitoring treatment participation and progress, collecting DNA samples, and scheduling regular polygraph examinations. The deputy also makes community, and office contacts and enforces court-ordered conditions, including GPS monitoring when applicable.</p> <p>In addition, the deputy is responsible for ensuring compliance with all legislative mandates, including community notification, residency restrictions, and sex offender registration. They coordinate the local Sex Offender Notification Committee and represent Benton County at statewide Sex Offender Supervision Network meetings. Collaboration with local law enforcement agencies supports a coordinated response to risk management and community concerns.</p>
<p>Program Category:</p>	<p>Supervision</p>
<p>Program Objectives:</p>	<ol style="list-style-type: none"> 1. Serve the community by enhancing public safety through the reformation of justice involved individuals and the reduction of criminal behavior. 2. Identify individual risk and criminogenic needs using validated assessment tools to prioritize supervision intensity, interventions, and available resources. 3. Develop and maintain individualized case plans that address risk factors and promote pro-social behavior through structured goals, referrals, and incentives.

	<p>4. Utilize evidence-based practices—including motivational interviewing, cognitive-behavioral strategies, and structured sanctions—to support behavioral change and hold individuals accountable.</p> <p>5. Provide consistent supervision through office visits, field contacts, home visits, and collateral checks, with contact frequency guided by assessed risk level.</p> <p>6. Refer individuals to appropriate treatment and support services, including substance use treatment, behavioral health care, employment assistance, housing resources, and educational programs.</p> <p>7. Support successful reentry and stabilization through coordination with local service providers and the Transition Program.</p> <p>8. Collaborate with courts, law enforcement, the Oregon Department of Corrections, and community partners to ensure a coordinated and responsive supervision strategy.</p>
Method(s) of Evaluation:	Statewide Outcome Measures; internal caseload audits

Monthly Average to be Served: 230

Type of Offender(s) Served: Probation Parole/Post-Prison Local Control
 Crime Category: Felony Misdemeanor
 Gender: Male Female
 Risk Level: High Medium Low

Which Treatment Provider(s) Will You Use Within This Program?

Provider Name	Treatment Type <small>(ie., Anger Management, Cognitive, DV, Dual Diagnosis, Sex Offender, Inpatient Substance Abuse, or Outpatient Substance Abuse)</small>	What, if any, state dollars are budgeted to the program and how much to each fund? <small>(ie., GIA-\$25,000; M57-\$5000)</small>

Funding Sources

<input checked="" type="checkbox"/> State Grant-In-Aid Fund	2,693,345
<input checked="" type="checkbox"/> DOC M57 Supplemental Fund	<u>165,130</u>

<input type="checkbox"/> Family Sentencing Alternative Program	_____
<input type="checkbox"/> Transitional Fund	_____
<input checked="" type="checkbox"/> CJC Justice Reinvestment Grant	305,000
<input type="checkbox"/> CJC Treatment Court Grant	_____
<input type="checkbox"/> County General Fund	_____
<input type="checkbox"/> Supervision Fees	_____
<input type="checkbox"/> Biennial Carryover (GIA, M57, FSAP)	_____
<input type="checkbox"/> Other Fees (revenue)	_____
<input type="checkbox"/> Other State or Federal Grant	_____
Other: Please Identify	
<input checked="" type="checkbox"/> Biennial Carryover (General Fund)	343,006
<input type="checkbox"/>	_____
<input type="checkbox"/>	_____

Additional Comments:

Program Name:	Sex Offender Program Services
Program Description:	<p>Sex Offender Services / Treatment</p> <p>This program provides contracted sex offender treatment services for individuals under supervision in Benton County who have been convicted of sex offenses. Services are focused on reducing recidivism by addressing criminogenic risk factors, reinforcing pro-social behavior, and increasing individual accountability.</p> <p>All treatment services follow a cognitive-behavioral model and are designed to challenge thinking errors, reduce harmful behaviors, and support long-term change. Treatment is tailored to each individual based on their assessed level of risk and may include:</p> <ul style="list-style-type: none"> • Individual assessments and clinical evaluations. • Long-term sex offender treatment groups. • Short-term intervention groups for non-paraphilic JII's. • Individual counseling sessions. • Aftercare and maintenance groups for post-treatment support. <p>Sessions are typically held weekly or bi-weekly and may include individual sessions. The duration of treatment varies depending on risk level, compliance with conditions of supervision, and treatment progress, ranging from nine months to several years. A sliding fee scale is used to determine the participant's cost for services; however, no one is denied treatment due to an inability to pay.</p> <p>These services are delivered by contracted community providers who are certified by the Sex Offender Treatment Board and are coordinated closely with the supervising deputy to ensure consistent monitoring and integration into the supervision plan.</p> <p>Sex Offender Services / Polygraph Examinations</p> <p>Polygraph examinations are conducted by a contracted polygraph examiner, specially trained and certified to perform this task. Polygraph examinations are an integral component of the supervision and treatment process for individuals convicted of sex offenses. Administered by a certified and contracted examiner, polygraphs are used to deter prohibited behavior, verify compliance, and provide therapeutic and supervisory insights. Polygraphs are administered every six months for maintenance compliance for sex offenders engaged in treatment,</p>

	<p>and yearly for sex offenders who have completed treatment. Specific incident polygraphs are also administered when there is suspected prohibited activity.</p> <p>Polygraph services include:</p> <ul style="list-style-type: none"> • Full sexual history disclosure polygraphs – required for successful completion of sex offender treatment. • Maintenance polygraphs – conducted every six months for individuals currently in treatment. • Annual polygraphs – administered post-treatment to ensure continued compliance. • Specific incident polygraphs – used when there is suspicion of prohibited behavior or violations. <p>These examinations support treatment progress by encouraging truthfulness and identifying risk factors early. Polygraphs may also be used, within program capacity, as a supervision tool for individuals convicted of other offenses when deemed appropriate. All indigent sex offenders are referred to a contracted polygraph examiner; justice involved individuals who could pay may be referred to a private polygraph examiner.</p>
<p>Program Category:</p>	<p>Behavioral Health Treatment Services - SO</p>
<p>Program Objectives:</p>	<ol style="list-style-type: none"> 1. All individuals convicted of sex offenses under supervision in Benton County will be evaluated by an approved treatment provider and referred to treatment as recommended by the evaluator. 2. Sex offenders will submit to polygraph examination in conjunction with sex offender treatment to support supervision and treatment integrity. 3. The program will utilize evidence-based, cognitive behavioral interventions to address criminogenic risk factors and diminish justice involved individuals' anti-social attitudes and beliefs. 4. Treatment providers and supervising deputies will maintain regular communication to monitor client progress, address violations, and ensure consistency in treatment and supervision goals. 5. 95% of eligible sex offenders involved in the Benton County Sex Offender Treatment Group will undergo a full sexual history disclosure polygraph.

	<p>6. 95% of all eligible sex offenders involved in the Benton County Sex Offender Treatment Group will pass a full sexual history disclosure polygraph before successfully completing treatment.</p> <p>7. 95% of eligible sex offenders engaged in ongoing treatment will undergo a maintenance polygraph every six months.</p> <p>8. 95% of eligible sex offenders who have completed treatment will submit to a yearly maintenance polygraph to monitor compliance post-treatment.</p> <p>9. No individual will be denied access to treatment or polygraph services due to an inability to pay; a sliding fee scale will be applied to ensure equity and accessibility.</p>
Method(s) of Evaluation:	Statewide Outcome Measures; internal caseload audits

Monthly Average to be Served: 30

Type of Offender(s) Served:

- Probation
- Parole/Post-Prison
- Local Control

Crime Category:

- Felony
- Misdemeanor

Gender:

- Male
- Female

Risk Level:

- High
- Medium
- Low

Which Treatment Provider(s) Will You Use Within This Program?

Provider Name	Treatment Type <small>(ie., Anger Management, Cognitive, DV, Dual Diagnosis, Sex Offender, Inpatient Substance Abuse, or Outpatient Substance Abuse)</small>	What, if any, state dollars are budgeted to the program and how much to each fund? <small>(ie., GIA-\$25,000; M57-\$5000)</small>
Karen Cox Counseling, Inc.	Sex Offender Treatment	GIA-\$0.00, M57-\$0.00

Funding Sources

<input checked="" type="checkbox"/> State Grant-In-Aid Fund	17,924
<input type="checkbox"/> DOC M57 Supplemental Fund	
<input type="checkbox"/> Family Sentencing Alternative Program	
<input type="checkbox"/> Transitional Fund	
<input type="checkbox"/> CJC Justice Reinvestment Grant	
<input type="checkbox"/> CJC Treatment Court Grant	
<input type="checkbox"/> County General Fund	
<input type="checkbox"/> Supervision Fees	
<input type="checkbox"/> Biennial Carryover (GIA, M57, FSAP)	
<input checked="" type="checkbox"/> Other Fees: Polygraph	16,578
<input checked="" type="checkbox"/> Other Fees: Sex Offender	34,897
<input type="checkbox"/> Other State or Federal Grant	
Other: Please Identify	
<input type="checkbox"/>	
<input type="checkbox"/>	
<input type="checkbox"/>	

Additional Comments:

Program Name:	Subsidy / Transition Services
Program Description:	<p>Subsidy / Transition Services</p> <p>The Subsidy / Transition Services program provides short-term financial assistance to eligible justice-involved individuals (JII's) under supervision in Benton County. The goal of the program is to promote public safety, support successful community reintegration, and reduce recidivism by addressing immediate stabilization needs for individuals transitioning from custody or facing significant barriers to compliance.</p> <p>This program supports individuals releasing from the Oregon Department of Corrections, the Benton County Jail, or those in the community who demonstrate financial hardship and a substantial need for transitional support. Each case is reviewed on a case-by-case basis to determine if the pose a substantial risk to public safety and demonstrates motivation to comply with supervision and case plan expectations.</p> <p>Subsidy funds may be used to assist with:</p> <ul style="list-style-type: none"> • Transitional housing placement • Short-term rental or utility support • Food, hygiene products, and basic necessities • Work-related clothing or tools • Haircuts and identification documents • Medication or behavioral health-related expenses • Transportation, including bus passes or fuel assistance • Emergency or crisis intervention <p>This program may also be used to facilitate placement in residential substance use treatment programs for individuals who lack the financial means to access care independently. Deputies submit subsidy requests to the Community Corrections Director or designee for approval.</p> <p>By addressing immediate needs and supporting community stabilization, the Subsidy / Transition Services program helps reduce barriers to compliance, increase engagement with supervision and services, and enhance overall public safety outcomes.</p>
Program Category:	Transition Services
Program Objectives:	<ol style="list-style-type: none"> 1. Support the successful transition of justice-involved individuals from custody to the community by providing targeted, short-term financial assistance.

	<p>2. Assist individuals in securing stable and appropriate housing upon release to reduce the risk of homelessness and increase supervision compliance.</p> <p>3. Provide access to essential resources—such as food, hygiene products, identification, and transportation—to remove immediate barriers to stabilization.</p> <p>4. Ensure that all subsidy requests are reviewed individually and approved based on demonstrated need, motivation, and potential for successful reintegration.</p> <p>5. Prioritize subsidies for individuals assessed as moderate or high risk and with significant housing or behavioral health-related needs.</p>
Method(s) of Evaluation:	Statewide Outcome Measures; internal caseload audits

Monthly Average to be Served: 2

Type of Offender(s) Served: Probation Parole/Post-Prison Local Control

Crime Category: Felony Misdemeanor

Gender: Male Female

Risk Level: High Medium Low

Which Treatment Provider(s) Will You Use Within This Program?

Provider Name	Treatment Type (ie., Anger Management, Cognitive, DV, Dual Diagnosis, Sex Offender, Inpatient Substance Abuse, or Outpatient Substance Abuse)	What, if any, state dollars are budgeted to the program and how much to each fund? (ie., GIA-\$25,000; M57-\$5000)

Funding Sources

State Grant-In-Aid Fund

DOC M57 Supplemental Fund

Family Sentencing Alternative Program

Transitional Fund

8,540

CJC Justice Reinvestment Grant

CJC Treatment Court Grant

County General Fund

Supervision Fees

Biennial Carryover (GIA, M57, FSAP)

Other Fees (revenue)

Other State or Federal Grant

Other: Please Identify

Additional Comments:

Program Name:	Evidence Based Programming
Program Description:	<p>Evidence Based Programming</p> <p>The Evidence-Based Programming (EBP) component provides structured cognitive-behavioral interventions designed to reduce recidivism by targeting the criminogenic needs of justice involved individuals (JII's) under supervision in Benton County. Programming is delivered in-house by specially trained Parole and Probation Deputies certified in evidence-based curriculum.</p> <p>These group-based interventions are grounded in the principles of effective correctional intervention, including risk, need, and responsivity (RNR), and are designed to help individuals move through stages of change, build cognitive skills, and adopt pro-social behaviors. Programming addresses criminal thinking patterns, substance use, decision-making, and emotional regulation.</p> <p>Groups are facilitated in a highly structured and interactive format and are offered several times throughout the year at no cost to the JII. The goal is to prepare participants for success in the community by increasing insight, improving decision-making, and reducing behavior linked to criminal activity.</p>
Program Category:	Behavioral Health Treatment Services - CBT
Program Objectives:	<ol style="list-style-type: none"> 1. Deliver cognitive-behavioral programming to justice involved individuals identified as moderate to high risk through validated assessment tools. 2. Utilize evidence-based curricula designed to address criminogenic needs, challenge criminal thinking, and support the development of pro-social skills. 3. Promote behavioral change by teaching skills related to decision-making, problem-solving, emotional regulation, and relapse prevention, cognitive self-change and social skills. 4. Monitor program fidelity through staff coaching, quality assurance reviews, and participation in audits such as the Correctional Program Checklist (CPC), where applicable. 5. Collaborate with supervising Deputies to align program participation with individual case plans and supervision goals.
Method(s) of Evaluation:	Statewide Outcome Measures; internal caseload audits, Correctional Program Checklist (CPC)

Monthly Average to be Served: 8

Type of Offender(s) Served: Probation Parole/Post-Prison Local Control
 Crime Category: Felony Misdemeanor
 Gender: Male Female
 Risk Level: High Medium Low

Which Treatment Provider(s) Will You Use Within This Program?

Provider Name	Treatment Type (ie., Anger Management, Cognitive, DV, Dual Diagnosis, Sex Offender, Inpatient Substance Abuse, or Outpatient Substance Abuse)	What, if any, state dollars are budgeted to the program and how much to each fund? (ie., GIA-\$25,000; M57-\$5000)
PO Facilitated	MET,T4C,CBI, CBI-EMPL	GIA-\$0.00, M57 \$0.00, JRG-\$30,000

Funding Sources

- State Grant-In-Aid Fund _____
 - DOC M57 Supplemental Fund _____
 - Family Sentencing Alternative Program _____
 - Transitional Fund _____
 - CJC Justice Reinvestment Grant 30,000 _____
 - CJC Treatment Court Grant _____
 - County General Fund _____
 - Supervision Fees _____
 - Biennial Carryover (GIA, M57, FSAP) _____
 - Other Fees (revenue) _____
 - Other State or Federal Grant _____
- Other: Please Identify
- _____
 - _____
 - _____

Additional Comments:

Program Name:	Transition Center
Program Description:	<p>Transition Center</p> <p>The Transition Center Program provides a highly structured, clean and sober living environment designed to support indigent justice involved individuals (JII's) as they transition from custody into the community. The program serves as a critical stabilization resource, helping individuals work toward self-sufficiency and successful reentry.</p> <p>The Transition Center consists of two fully furnished apartments and has the capacity to house up to six residents at any given time. The facility is monitored by a designated Parole and Probation Deputy and part-time Case Monitors. Staff coverage includes nights, weekends, and holidays to ensure ongoing accountability and safety.</p> <p>Residents are subject to strict conditions including:</p> <ul style="list-style-type: none"> • Frequent drug and alcohol testing • Daily residence and property checks • A mandatory curfew • Assigned household cleaning responsibilities • Weekly community service in lieu of rent <p>Participation in recommended programming is required and may include substance use treatment, sex offender treatment, job search activities, and cognitive-behavioral groups. Residency at the Transition Center typically lasts up to 90 days or more, based on compliance and continued progress toward case plan goals.</p> <p>By providing a safe, supervised, and supportive environment, the Transition Center Program promotes public safety, reduces recidivism risk, and helps individuals build the foundation for long-term stability in the community.</p>
Program Category:	Transition Services
Program Objectives:	<ol style="list-style-type: none"> 1. Provide transitional housing and a highly structured, clean and sober living environment for up to six indigent justice involved individuals (JII's) in need of stabilization or reintegration support. 2. Evaluate individuals pending release from the Department of Corrections (DOC) or Local Control incarceration for placement at the Transition Center. Alternative subsidy funding may be considered only if the individual is ineligible for placement or no bed is available. 3. Provide structured programming and supervision through treatment referrals, job search support, curfews, property checks, drug testing, and required responsibilities. Progress is monitored collaboratively by Parole and Probation Deputies and Case Monitors to ensure accountability and alignment with case plans.
Method(s) of Evaluation:	Internal review / caseload audits

Monthly Average to be Served: 6

Type of Offender(s) Served: Probation Parole/Post-Prison Local Control
 Crime Category: Felony Misdemeanor
 Gender: Male Female
 Risk Level: High Medium Low

Which Treatment Provider(s) Will You Use Within This Program?

Provider Name	Treatment Type (ie., Anger Management, Cognitive, DV, Dual Diagnosis, Sex Offender, Inpatient Substance Abuse, or Outpatient Substance Abuse)	What, if any, state dollars are budgeted to the program and how much to each fund? (ie., GIA-\$25,000; M57-\$5000)

Funding Sources

- State Grant-In-Aid Fund _____
- DOC M57 Supplemental Fund _____
- Family Sentencing Alternative Program _____
- Transitional Fund _____
- CJC Justice Reinvestment Grant 75,099 _____
- CJC Treatment Court Grant _____
- County General Fund _____
- Supervision Fees _____
- Biennial Carryover (GIA, M57, FSAP) _____
- Other Fees (revenue) _____
- Other State or Federal Grant _____
- Other: Please Identify
- Transitional Program (Levy) 800,310 _____
- _____



Additional Comments:

Program Name:	Custodial / Sanction Beds
Program Description:	Custodial / Sanction Beds
Program Category:	Custodial / Sanction Beds
Program Objectives:	Custody/Sanction beds To provide sanctioning capacity for violations of supervision (felony and misdemeanor “designated drug and/or person misdemeanors”) and sentenced SB1145 offenders.
Method(s) of Evaluation:	Statewide Outcome Measures; internal caseload audits

Monthly Average to be Served: 10

Type of Offender(s) Served: Probation Parole/Post-Prison Local Control
 Crime Category: Felony Misdemeanor
 Gender: Male Female
 Risk Level: High Medium Low

Which Treatment Provider(s) Will You Use Within This Program?

Provider Name	Treatment Type (ie., Anger Management, Cognitive, DV, Dual Diagnosis, Sex Offender, Inpatient Substance Abuse, or Outpatient Substance Abuse)	What, if any, state dollars are budgeted to the program and how much to each fund? (ie., GIA-\$25,000; M57-\$5000)

Funding Sources

- State Grant-In-Aid Fund _____
- DOC M57 Supplemental Fund _____
- Family Sentencing Alternative Program _____
- Transitional Fund _____
- CJC Justice Reinvestment Grant _____
- CJC Treatment Court Grant _____

- County General Fund _____
- Supervision Fees _____
- Biennial Carryover (GIA, M57, FSAP) _____
- Other Fees (revenue) _____
- Other State or Federal Grant _____
- Other: Please Identify
- _____
- _____
- _____

Additional Comments: The Benton County Sheriff's Office provides jail beds for 1145 jail sanctions through County Levy Fund dollars and is part of the overall Sheriff's Office budget. These jail beds are primarily rental beds at the Clatsop County Jail located in Astoria, Oregon.

Program Name:	Work Crew / Community Service
Program Description:	<p>Work Crew / Community Service</p> <p>The Work Crew / Community Service Program provides the placement, coordination, and monitoring of individuals ordered to perform community service or work crew as a condition of supervision or as part of an intermediate sanction. This program offers a structured accountability option that promotes community restoration while providing an alternative to incarceration.</p> <p>Work crew may be imposed in response to violations of conditions of supervision or as a sentencing condition for individuals on formal supervision, bench probation, or under municipal court jurisdiction. When imposed as a sanction, individuals who fail to comply with assigned work crew obligations may be required to serve the equivalent time in jail.</p> <p>The program operates in partnership with the Benton County Jail. Community Corrections provides administrative oversight and a Work Crew Coordinator, while the Jail provides direct supervision of the work crews in the field. This collaborative model ensures efficiency, consistent supervision, and program accountability.</p> <p>Work assignments typically include public service projects such as:</p> <ul style="list-style-type: none"> • Litter and debris removal • Landscaping and park maintenance • Graffiti cleanup • Cleaning of public or nonprofit facilities • Other approved tasks that benefit the community
Program Category:	Community Service and Work Crew
Program Objectives:	<ol style="list-style-type: none"> 1. Provide a structured, supervised work crew program as a court-ordered condition of supervision or as an intermediate sanction in response to violations. 2. Offer a restorative alternative to incarceration that promotes accountability and public benefit.
Method(s) of Evaluation:	Statewide Outcome Measures; internal caseload audits

Monthly Average to be Served: 35

Type of Offender(s) Served:

- Probation
 Parole/Post-Prison
 Local Control

Crime Category:

- Felony
 Misdemeanor

Gender:

- Male
 Female

Risk Level:

- High
 Medium
 Low

Which Treatment Provider(s) Will You Use Within This Program?

Provider Name	Treatment Type (ie., Anger Management, Cognitive, DV, Dual Diagnosis, Sex Offender, Inpatient Substance Abuse, or Outpatient Substance Abuse)	What, if any, state dollars are budgeted to the program and how much to each fund? (ie., GIA-\$25,000; M57-\$5000)

Funding Sources

- State Grant-In-Aid Fund 35,419
- DOC M57 Supplemental Fund _____
- Family Sentencing Alternative Program _____
- Transitional Fund _____
- CJC Justice Reinvestment Grant _____
- CJC Treatment Court Grant _____
- County General Fund _____
- Supervision Fees _____
- Biennial Carryover (GIA, M57, FSAP) _____
- Other Fees (revenue) _____
- Other State or Federal Grant _____
- Other: Please Identify
- _____
- _____
- _____

Additional Comments:

BENTON COUNTY
2025-2027 Community Corrections Budget Summary

Program Name	Grant in Aid	All Other Funds and Fees	Total
Administration (1)	\$445,588		\$445,588
Supervision (4) –	\$2,693,345	\$888,235 (\$343,006 carryover)	\$3,977,876
Community Supervision,			
Transition Program/Rel Planning,			
SO Supervision			
Sex Offender Program Services (2) – Treatment, Polygraph Exams	\$17,924	\$51,475	\$69,399
Subsidy / Transition Services (1) – (Transitional Fund dollars)		\$8,540	\$8,540
Evidence Based Programming		\$30,000	\$30,000
Transition Center (1); (County levy dollars)		\$800,310	\$800,310
Work Crew/Community Service	\$35,419		\$35,419
Total	\$3,192,276	\$1,778,560	\$4,970,836